



# GAT MONTHLY MEMBERSHIP PROGRESS REPORT

Results as of: 6/30/2024

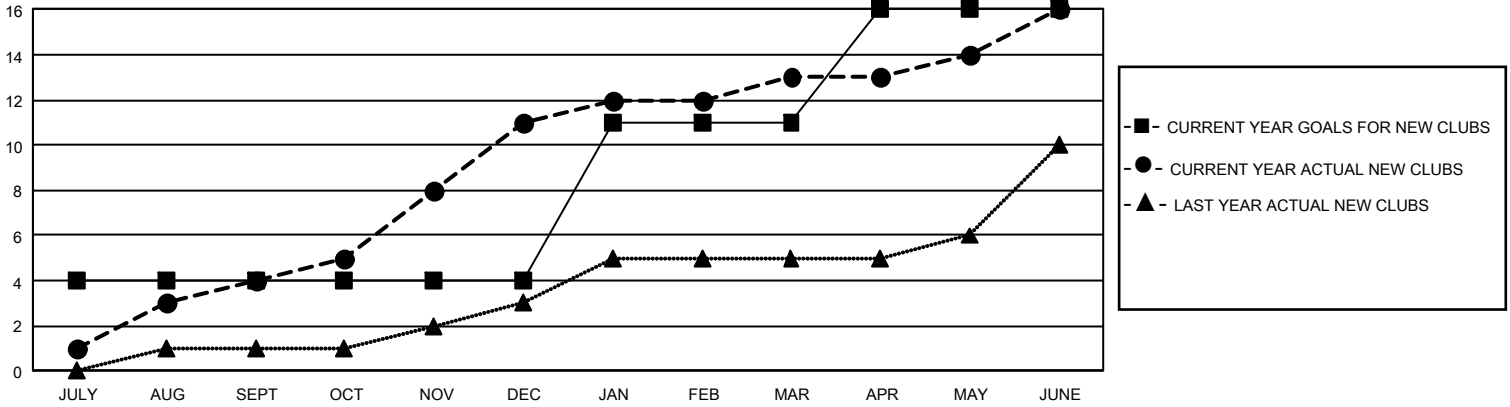
## GMT Constitutional Area 8, Group D

REPORT DOES NOT INCLUDE CLUBS IN UNDISTRICTED AREAS.

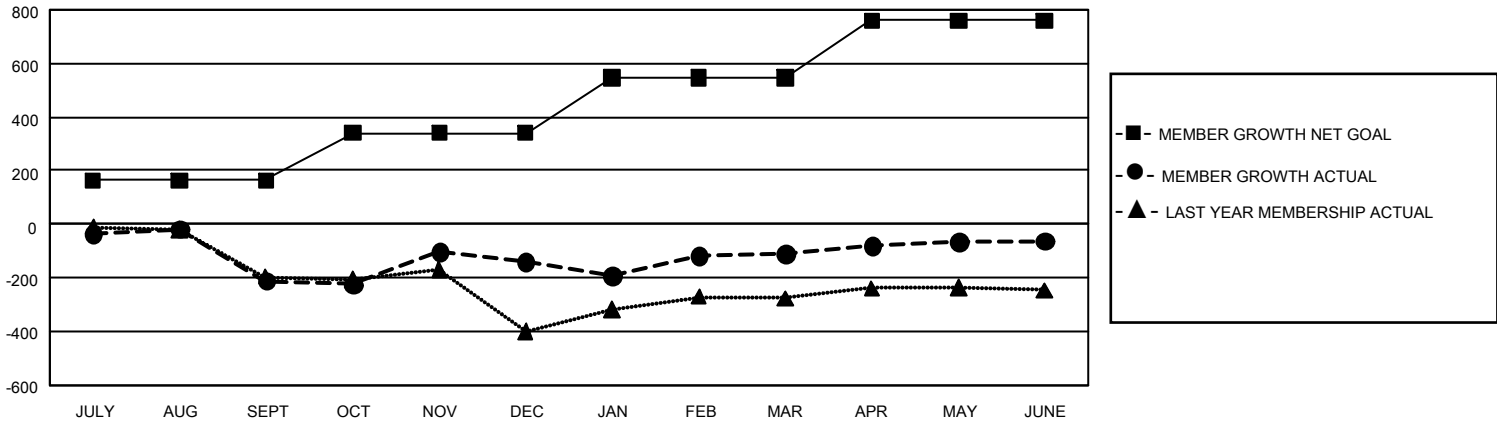
Clubs			
RESULTS FOR 2023-2024			
QUARTER	NEW CLUB GOAL	NEW CLUBS	DROPPED CLUBS
JULY/AUG/SEPT	12	4	2
OCT/NOV/DEC	0	7	5
JAN/FEB/MAR	21	2	5
APR/MAY/JUNE	15	3	2

Members			
RESULTS FOR 2023-2024			
QUARTER	MEMBER GROWTH NET GOAL	MEMBER GROWTH ACTUAL	DROPPED MEMBERS ACTUAL (including transfers)
JULY/AUG/SEPT	163	271	473
OCT/NOV/DEC	178	593	477
JAN/FEB/MAR	206	473	334
APR/MAY/JUNE	214	338	261

GOALS AND ACTUAL NEW CLUBS CUMULATIVE



GOALS AND ACTUAL MEMBERS CUMULATIVE



<b>DROPPED CLUBS: 14</b>  <b>DROPPED MEMBERS</b> DECEASED 20 CLUB CANCELLED 213 OTHER 1,313 <b>TOTAL 1,546</b>	126 CLUBS OF 197 ADDED 1 OR MORE NEW MEMBERS	<b>GENDER DISTRIBUTION</b> MALE 1,571 (38.68%) FEMALE 2,490 (61.30%) NON BINARY 1 (0.02%) PREFER NOT TO ANSWER 0 (0.00%)
	<a href="#">CLICK HERE FOR CUMULATIVE MEMBERSHIP DATA</a>	TOTAL FAMILY UNIT MEMBERS 520 FAMILY MEMBERS PAYING HALF DUES 304